

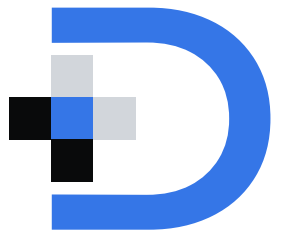


# 5 Questions to Ask every AI Vendor

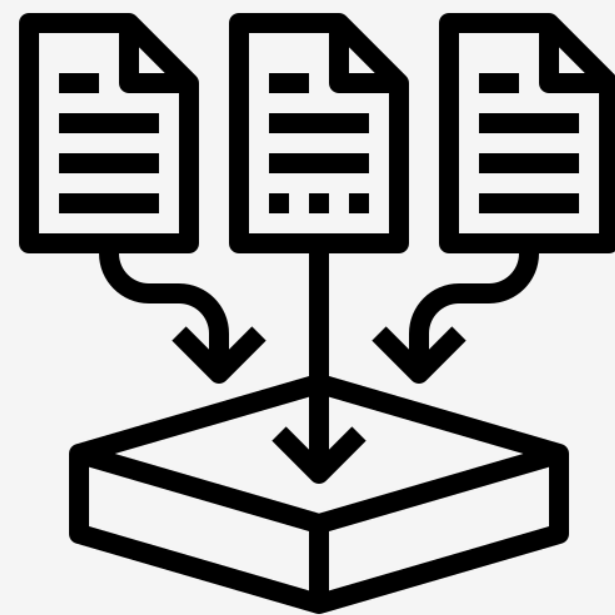
A crash course in understanding how this new technology applies to you and your organization



# First, a Primer. What is AI?

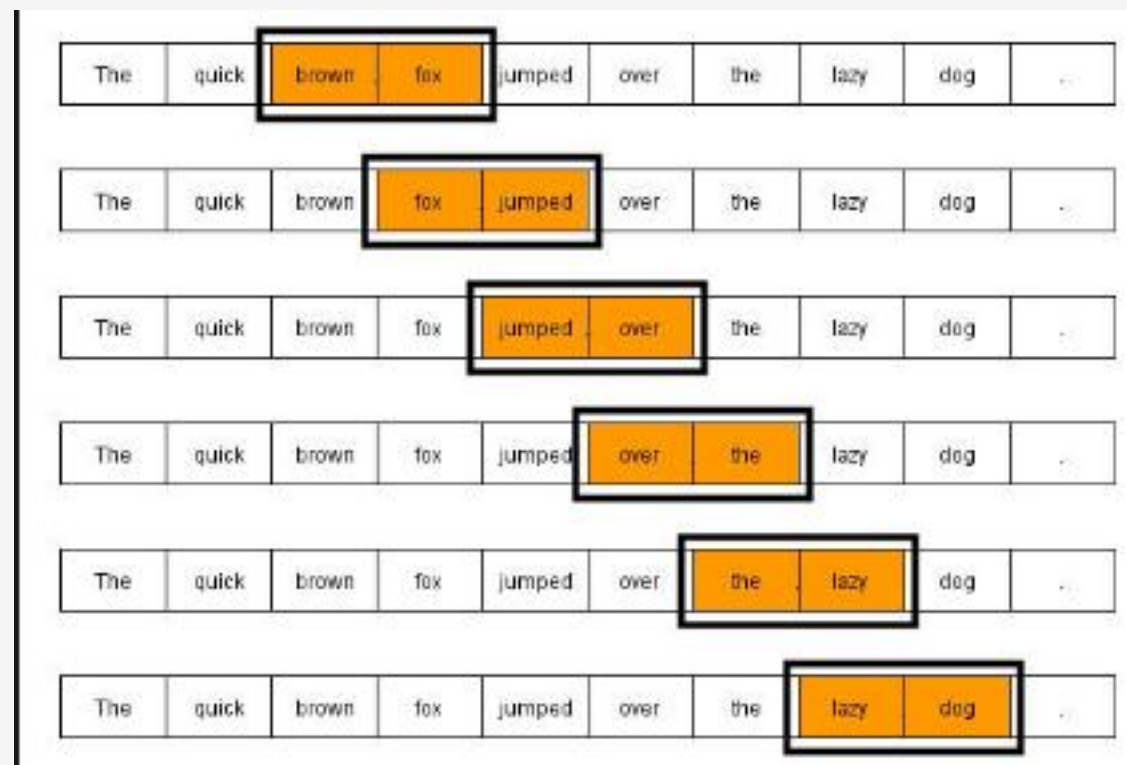


It's a lot of data.



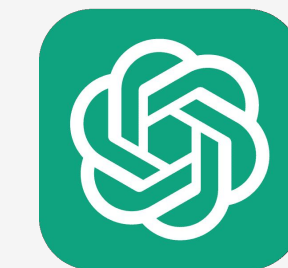
Think the whole internet and all the books ever written x 1,000

Trained to predict words in a sequence

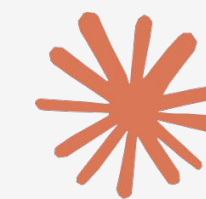


The quick brown fox jumps over the ...

Do that at big enough scale



ChatGPT



Claude

DocuCare

You get amazing results

BUSINESS | ENERGY & OIL

## Three Mile Island's Nuclear Plant to Reopen, Help Power Microsoft's AI Centers

The 20-year deal with Constellation Energy would kick-start the site of the nation's worst nuclear accident

By [Jennifer Hiller](#) [Follow](#)

Updated Sept. 20, 2024 at 12:36 pm ET



485



Gift unlocked article

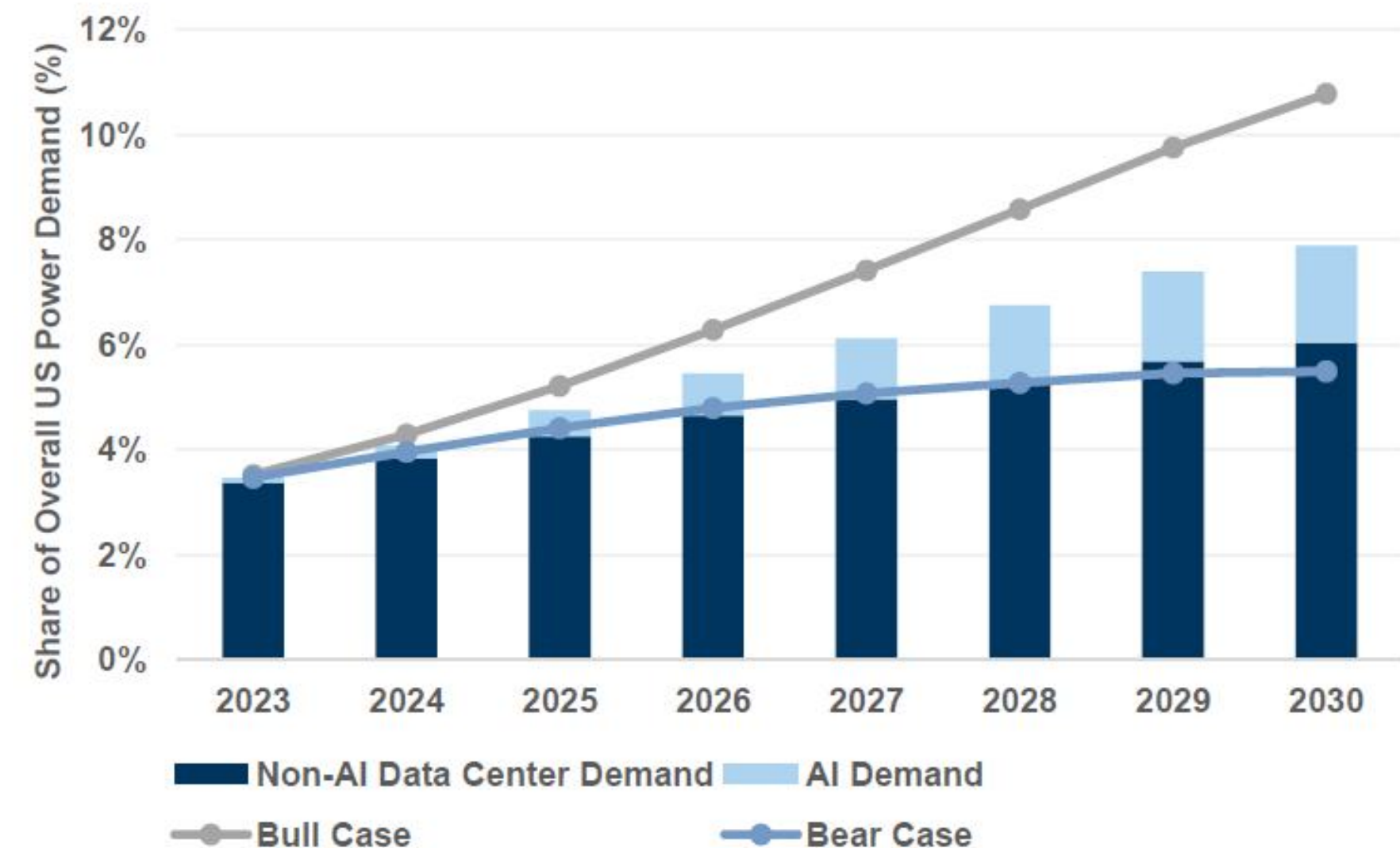


Listen (6 min)



**Exhibit 20: We expect data centers to comprise ~8% of US power demand by 2030 in our base case, with potential for 11% in our bull case and 5% in our bear case**

Data center demand as a share of total US power demand, %



Source: IEA, Goldman Sachs Global Investment Research, EIA



## AI Scribe / Documentation Assistance



AMA logo, Join, Renew, Enter Search Term, Member Benefits, Sign In

DIGITAL

### AI scribe saves doctors an hour at the keyboard every day

MAR 18, 2024 • 5 MIN READ By Andis Robeznieks, Senior News Writer

The most enthusiastic physician adopters of the AI ambient scribe were primary care physicians, psychiatrists and emergency doctors, Dr. Lee said, noting that, on average, most scribe-using physicians spent one less hour a day on the computer.

## Image Analysis / Diagnosis Assistance

### Diagnostic Performance of AI for Cancers Registered in A Mammography Screening Program: A Retrospective Analysis

[Inci Kizildag Yirgin, MD,<sup>1</sup>](#) [Yilmaz Onat Koyluoglu, MD,<sup>2</sup>](#) [Mustafa Ege Seker, MD,<sup>2</sup>](#) [Sibel Ozkan Gurdal, MD,<sup>3</sup>](#) [Ayse Nilufer Ozaydin, MD,<sup>4</sup>](#) [Beyza Ozcinar, MD,<sup>5</sup>](#) [Neslihan Cabioğlu, MD,<sup>5</sup>](#) [Yahit Ozmen, MD,<sup>5</sup>](#) and [Erkin Aribal, MD<sup>2</sup>](#)

[▶ Author information](#) [▶ Article notes](#) [▶ Copyright and License information](#) [▶ PMC Disclaimer](#)

**Results:** Area under curve was 0.853 (95% CI = 0.801-0.905) and the cut-off value for risk score was 34.5% with a sensitivity of 72.8% and a specificity of 88.3% for AI cancer detection in ROC analysis. Cancer detection rates were 67.3% for radiologists, 72.7% for AI, and 83.6% for radiologist and AI team-up. AI detected 72.7% of all cancers on its own, of which 77.5% were screen-detected, 15% were interval cancers, and 7.5% were missed cancers. **Conclusion:** AI may potentially enhance the capacity of breast cancer screening programs by increasing cancer detection rates and decreasing false-negative evaluations.



**Where is the data stored, and how long is it retained?**

**Good Answer:** “We store all data on secure, encrypted servers located within the United States to comply with local regulations. Our data retention is set by you, but is no longer than X”

**Red Flag:** “Our data is stored on international servers, and we don’t have a clear data retention policy.”





**Do you have HIPAA compliance? Can you provide your compliance documentation?**

**Good Answer:** “Yes, we are fully HIPAA compliant. We can provide our compliance documentation, including certifications and the latest audit reports, to demonstrate our adherence to all privacy and security standards.”

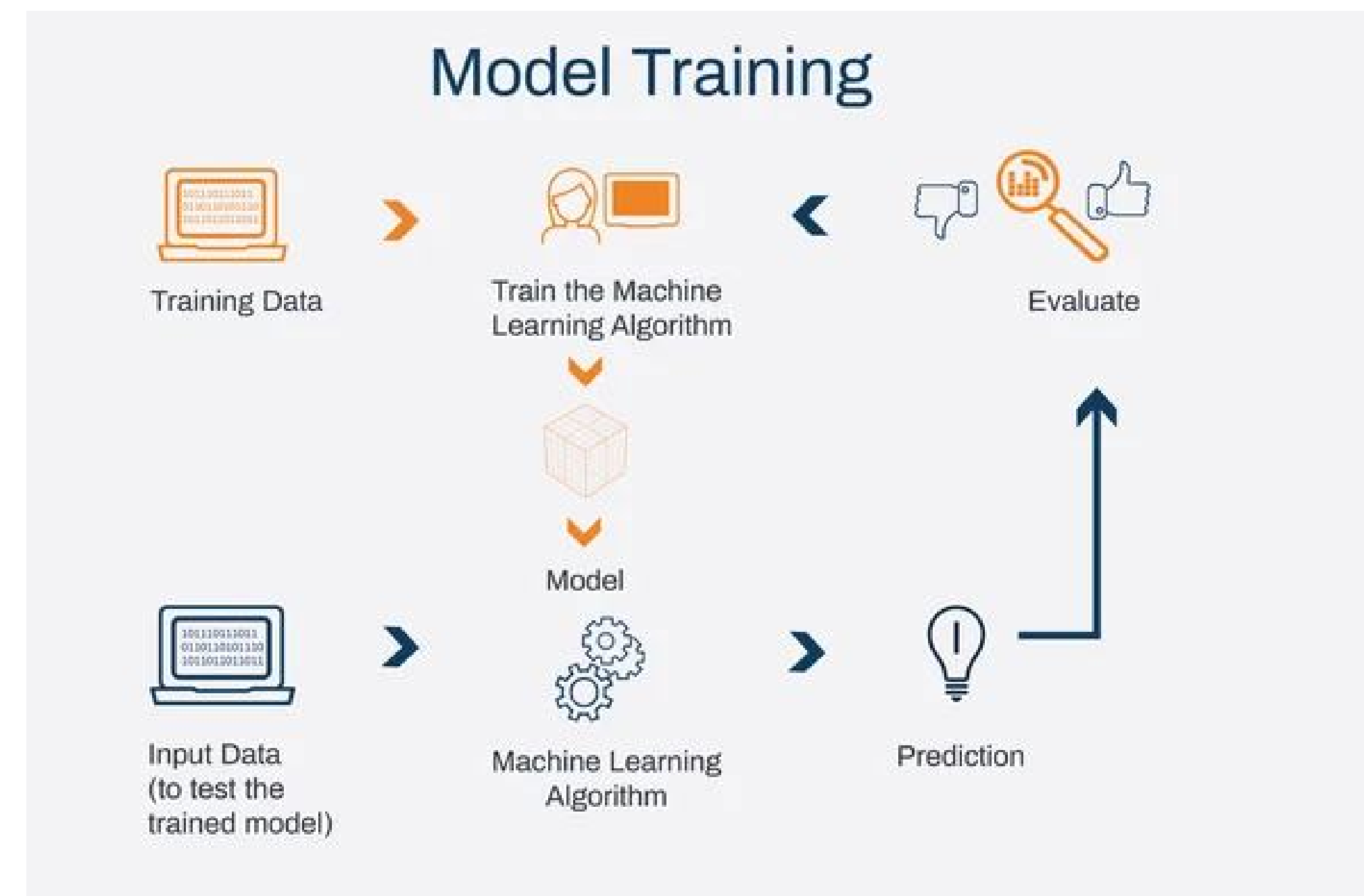
**Red Flag:** “We’re working towards HIPAA compliance but don’t have documentation available at the moment.”



**How do you handle training data involving PHI? What de-identification methods do you use?**

**Good Answer:** “We only use de-identified or anonymized data for training our AI models, following strict de-identification protocols as per HIPAA guidelines. We remove all personally identifiable information (PII) and apply techniques like data masking and tokenization to ensure patient privacy. Additionally, we have data use agreements in place and comply with all regulatory requirements.”

**Red Flag:** “We use raw patient data for training without any de-identification, but we ensure it’s secure.”





**What kind of support and training do you offer during implementation and ongoing use?**

**Good Answer:** “We provide comprehensive onboarding, including staff training sessions, user manuals, and 24/7 customer support. Our team assists with integration and remains available for any questions or technical issues that arise.”

**Red Flag:** “We deliver the AI solution as-is and do not offer training or ongoing support.”

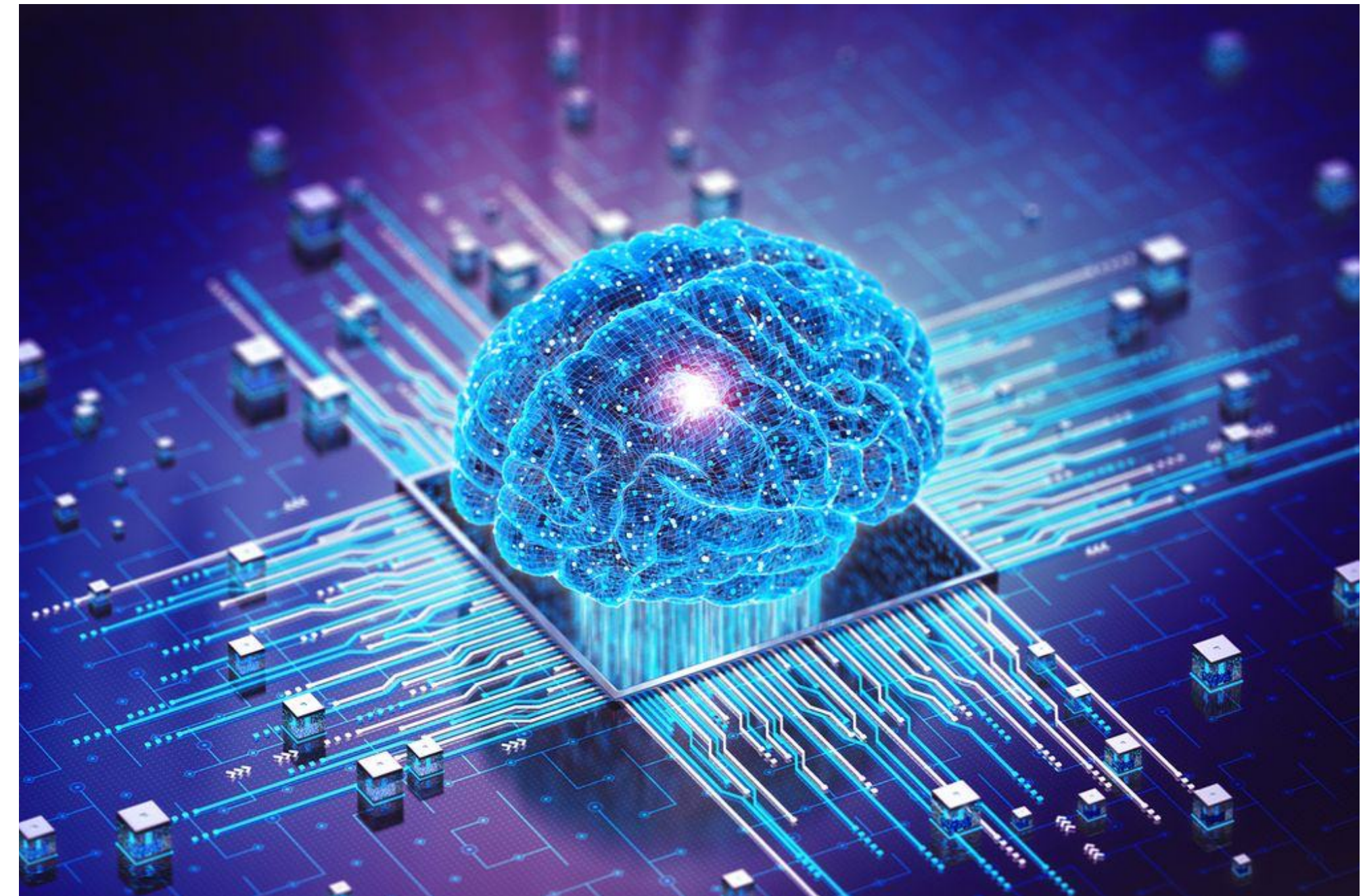




## What can this AI Do?

**Good Answer:** “Our AI solution is designed to assist healthcare professionals by enhancing efficiency and accuracy. It aids in data analysis, supports diagnostic decisions, and automates routine tasks, allowing doctors to focus more on patient care. It serves as a supportive tool alongside medical staff, not a replacement.”

**Red Flag:** “Our AI can handle all medical tasks independently and effectively replace doctors. It works like magic.”



 DocuCare

 THIE

# Thank you / Q&A

The rest of the time is reserved for questions

